

The CML Advanced Series is tailored to meet from low to high volume production requirements. With the Advanced Series, you get the features you need, without paying for extras you don't. The SCA 450 RT 500 series features a heavy-duty 3 or 4 moving blade solution with higher horsepower ratings for higher volume customers. Advanced series machines includes others horsepower that provides different cutting area with possibilities in high volume environments. Whatever your requirements, Cml offers an edger to meet your needs.

CML

Cml has industry-leading edgers to help you successfully optimize the use of all material. Designed to meet your unique production requirements, the high performance CML edger optimize materials and minimize costs. CML edgers deliver high quality cuts with limitless application possibilities. Whatever your requirements. CML has a edger to help you make the most of every situation.

CML ENGINEERING S.R.L.
Advanced Equipment
Intelligent Integration
Experienced Consulting
Incomparable Services
info@cml-engineering.it

Cml Features

- Heavy-duty Dip chain feed belt with hardened steel guides
- 6 top pressure roller with Extended pressure board
- Precision surface treated Arbour shaft and moving heads
- Operator adjustable 15mw lasers
- Complete range of optimization solutions



Technical Specifications	CML Multilame SCA 650 RT 700
Voltage	400V / 50Hz
Dust Connection (MAIN)	300mm diameter port/30 meters per second/7600Mc3/h
Machine Weight	6500Kg
Machine Dimensions	Lenght 255cm
	Width 245cm
	Height 200cm
Main Drive Motor	Hp 60-75-100-125 / Kw 44-55-74-92
Feed Belt Motor	3Kw
Feed Belt Speed	0 a 50 Mt/1"
Pressure Roll Motor	0.75Kw
Maximum pass thru width	1130mm (1200)
Feed belt width	500mm
Maximum Balde speed	3500 RPM
Maximum board Thickness	145mm (450mm Blade)
Minimum board Thickness	20mm
Minimum board Length	750mm (400mm with optional - small pieces)
Minimum board Width between fixed and moving blade	16mm
Maximum distance between fixed and moving table	470mm (both moving heads installed)
Maximum distance between fixed and moving table	600mm (only one moving heads installed)
Maximum distance between two and moving table	484mm (con 4 gruppi mobile installati)
Table working height from floor	780mm
Control panel for cutlist with up to 99 different program (Manual or automatic control)	
Position laser control (beam color red. Power 15mw maximum range 6m)	
Nylon center feed belt guide for glue line capability at 165ft per minute	
Sound enclosure padding for quite running reducing noise level 15db	
Automatic oil pump for feed chain with failure detection shutoff	

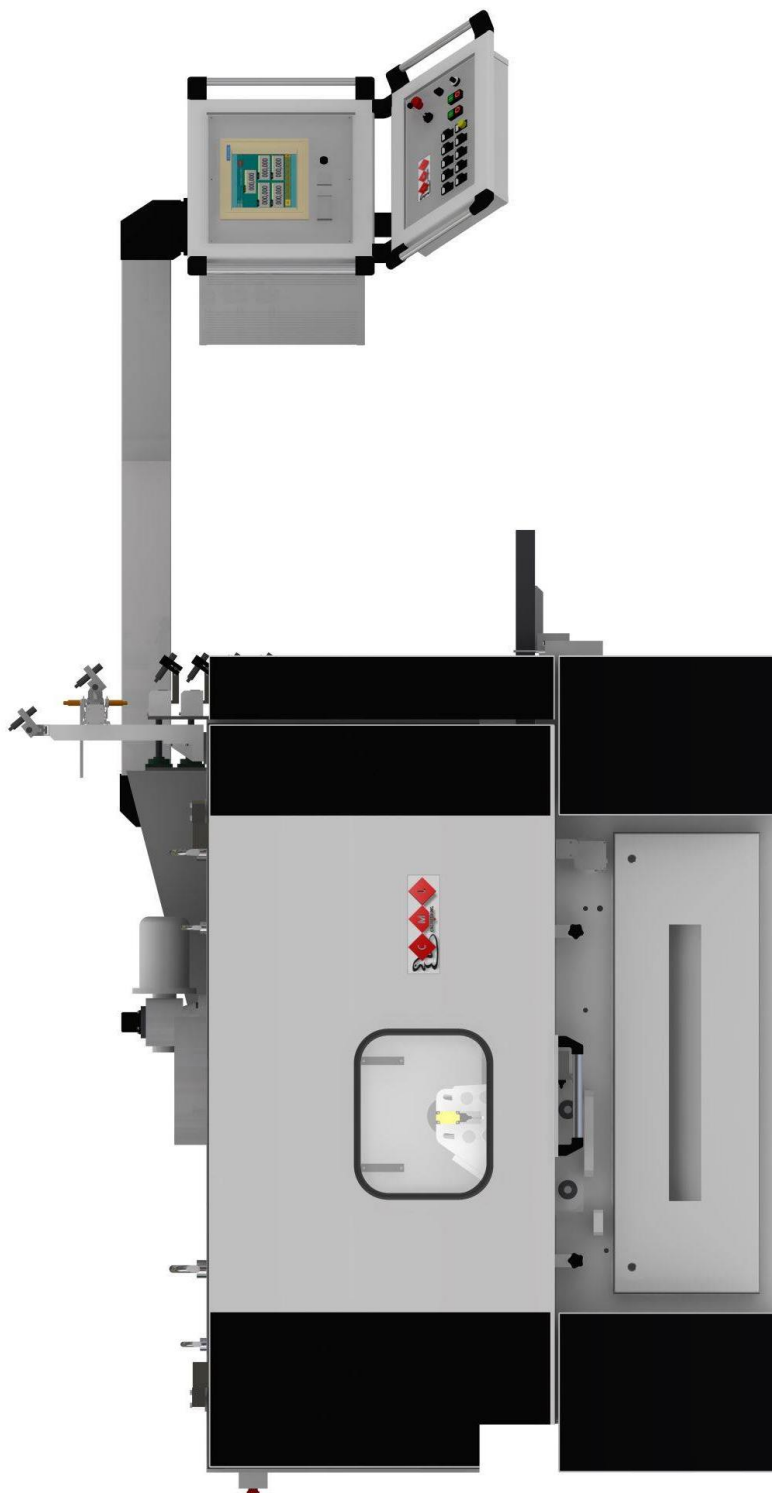
Specifications are subject to change.



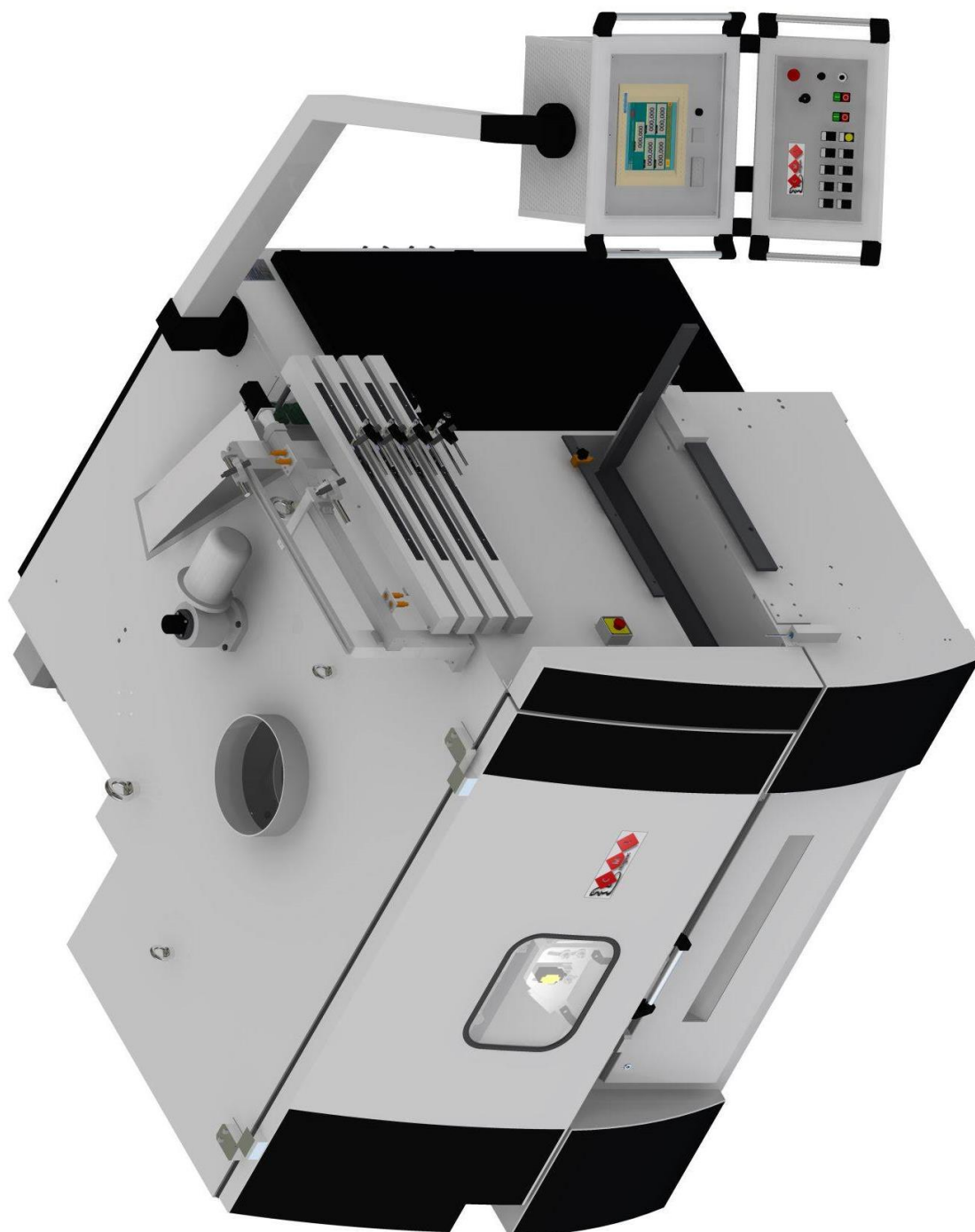
Sede legale : Via Torri Bianche 1 - 20871 VIMERCATE (MI) - ITALY
 Sede operativa : Via G. Galilei, 34/36 - 20060 GESSATE (MI) - ITALY
 Tel 0039-02-95384207

E-mail : info@cml-engineering.it - **Web :** www.cml-engineering.it

SCA 650 4RT 700

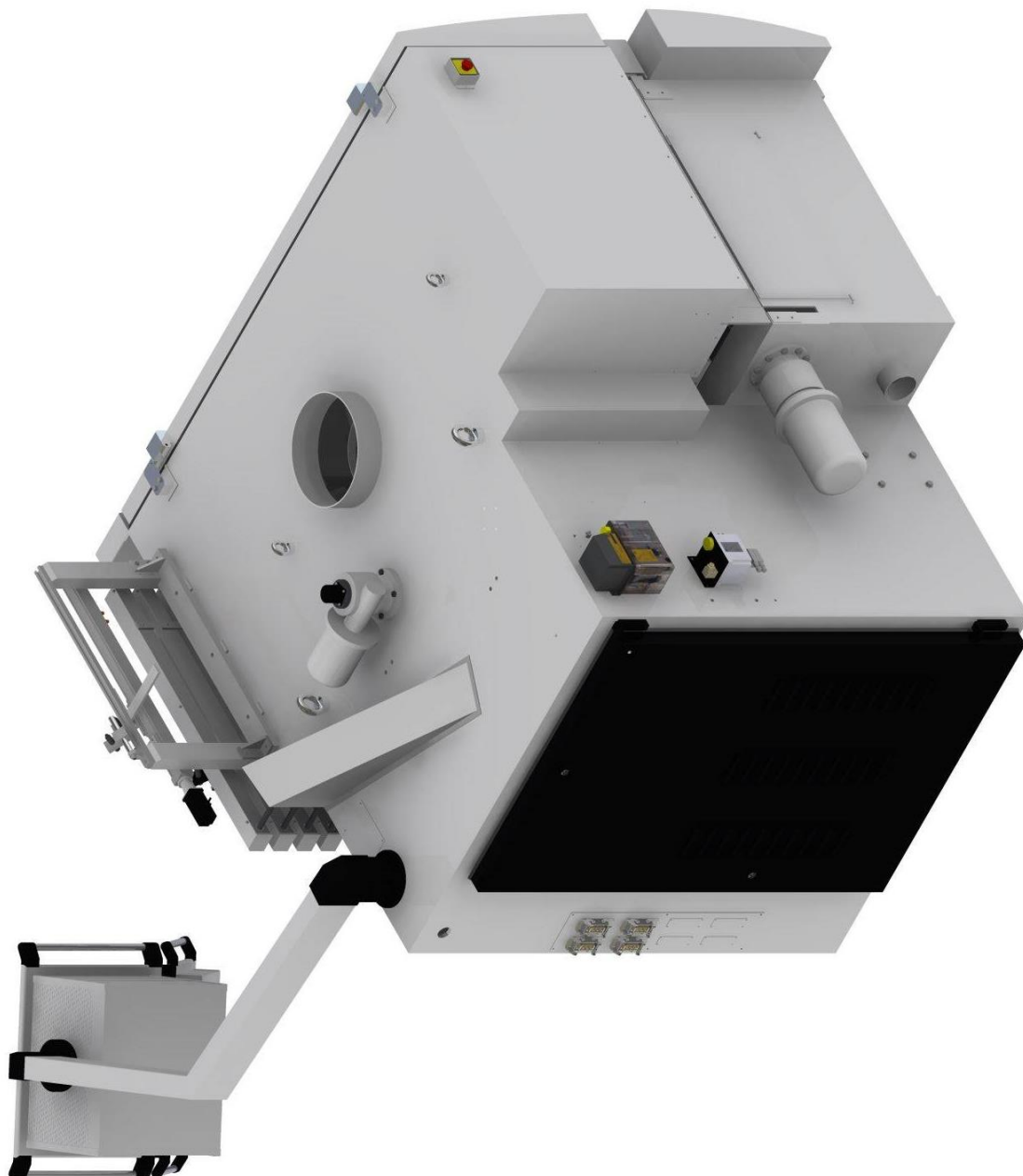


SCA 650 4RT 700



SCA 650 4RT 700

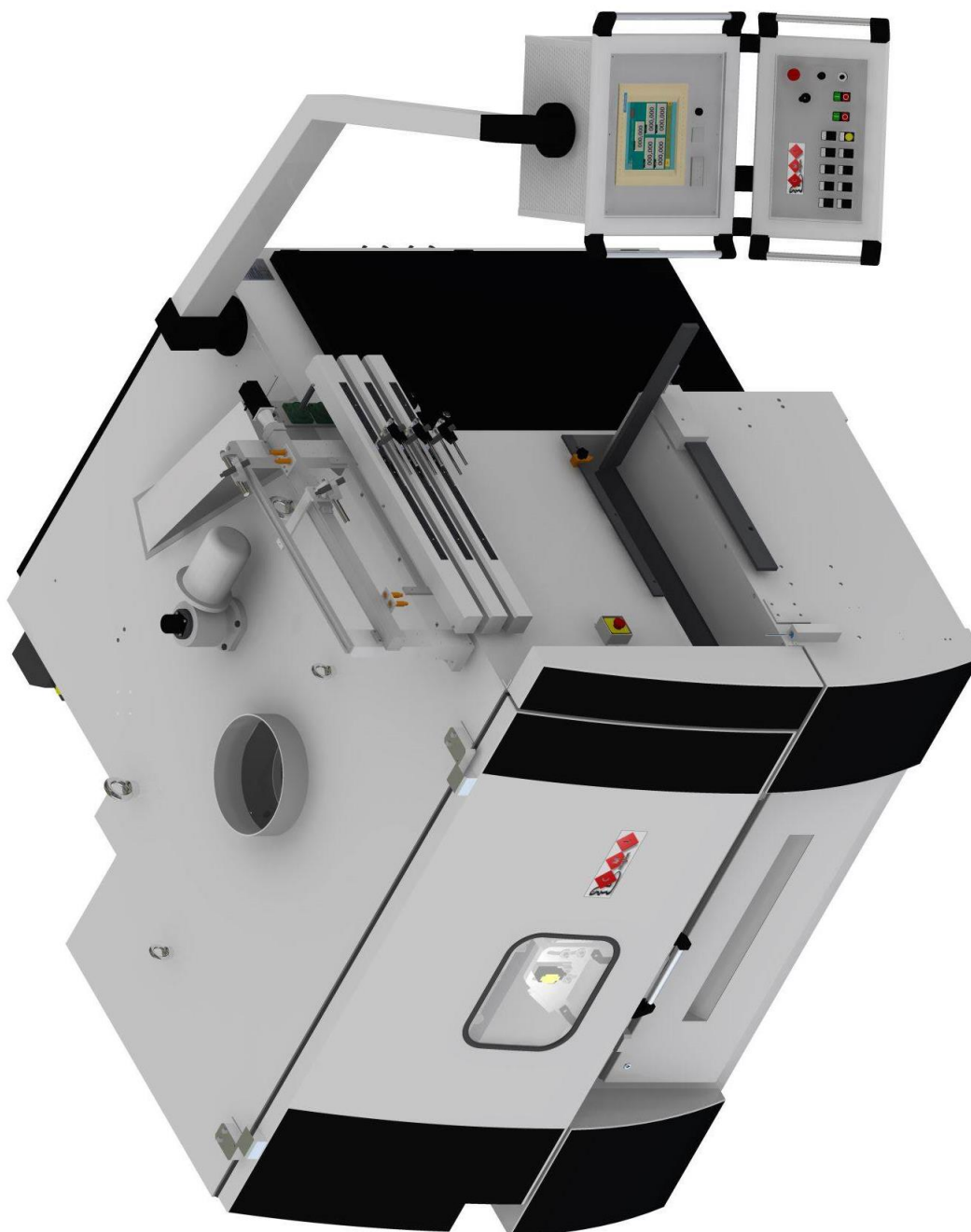




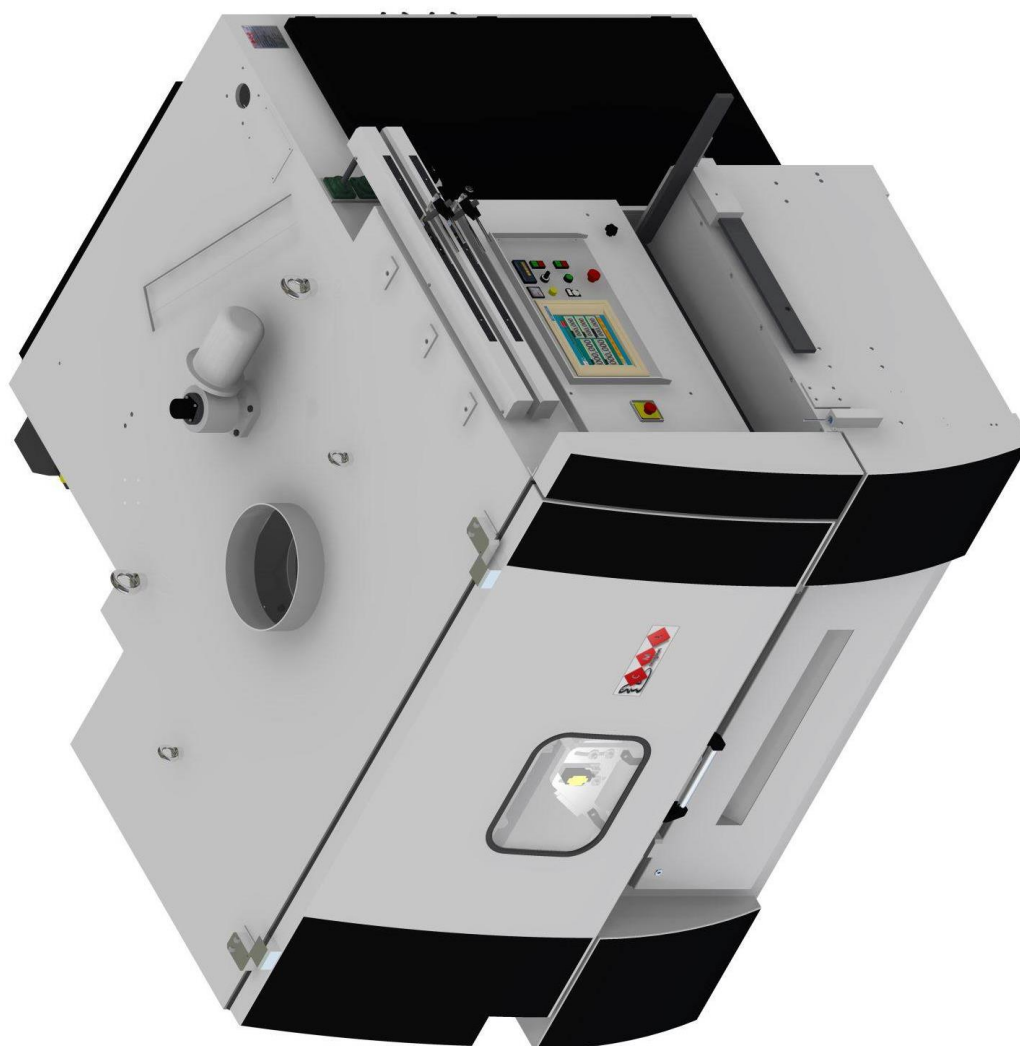
SCA 650 4RT 700



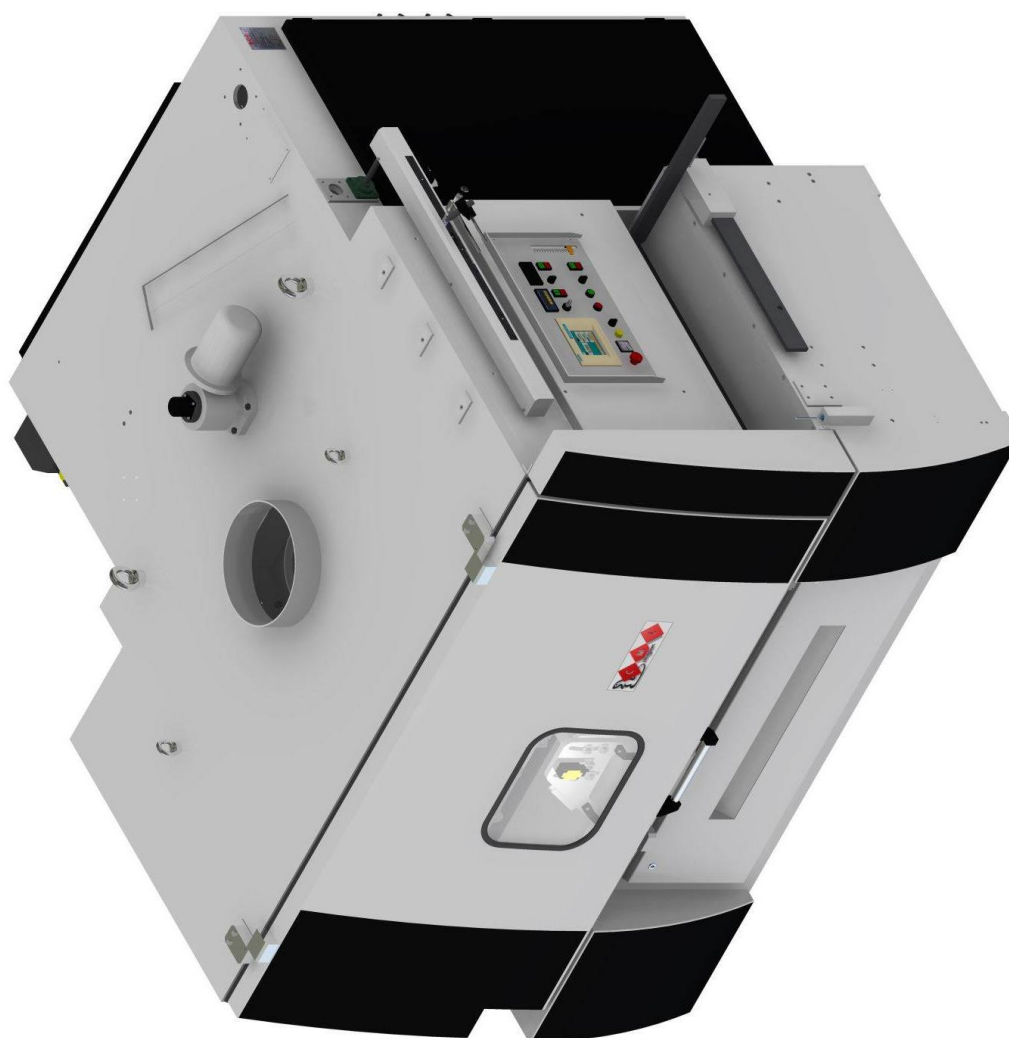
SCA 650 3RT 700

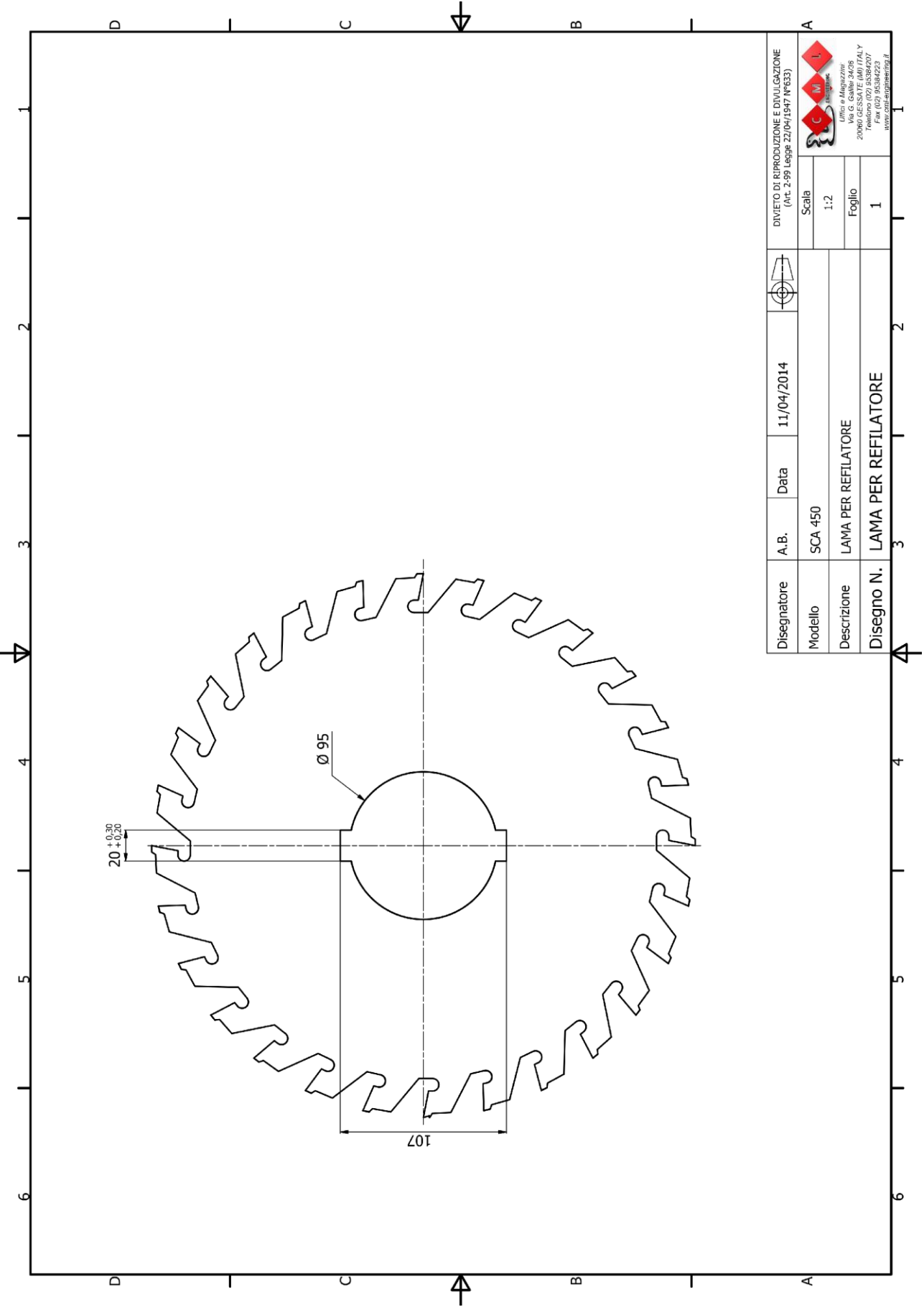



SCA 650 2RT 700



SCA 650 1RT 700





Disegnatore	A.B.	Data	11/04/2014	DIVIETO DI RIPRODUZIONE E DIVULGAZIONE (Art. 2-59 Legge 22/04/1947 N°633)	
Modello	SCA 450	Scala		1:2	 Ufficio e Magazzino Edger SCA 650 RT 700 20090 GASSATE (MI) ITALY Telefono (02) 95384207 Fax (02) 95384223 www.edger-engineering.it
Descrizione	LAMA PER REFILATORE	Foglio		1	
Disegno N.	LAMA PER REFILATORE				

